

# Nobility Windows Gold Collection

*exceptional quality and traditional value*



## NOT ALL WINDOWS ARE CREATED EQUAL

The Gold Collection by Nobility Windows is today's choice for exceptional quality at the right price. Whether you need a double-hung, a two- or three-section slider, or a picture window – we can accommodate your request and guarantee it for a lifetime.

## YOUR HOME IS YOUR GREATEST INVESTMENT

Protect it and maintain your comfort with highly energy efficient Insulator solid vinyl replacement windows. An excellent investment with a contoured stylish appeal is made to suit your needs and special decor.

## MADE IN AMERICA: CERTIFIED AND GUARANTEED

- Energy Star® Qualified
- Engineered Structurally Sound
- Lifetime, Non-Prorated, Transferable Warranty
- Relocation and Natural Disaster Protection
- Quality Custom Manufacturing Since 1955
- Complete line including casements, awnings, bays, bows, basements and more



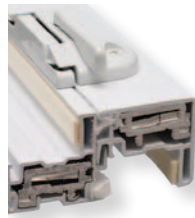
### Recessed tilt latches

- Better appearance
- Easy to operate (ergonomic)



### Dual vent locks

- Allows window to remain partially open
- Prevents further opening of window from the outside



### Metal reinforced lock and keeper rail

- Provides strength and rigidity



SINCE 1960

**Thrush**  
& SON<sup>®</sup>  
Complete Home Improvement  
CO



**FEATURES**

1. Multichambered fusion-welded main & sash frame
2. Stepped-down jamb
3. Truly sloped sill
4. Beveled exterior with integral drip cap
5. Recessed accessory groove
6. Double-barrier finseal weather stripping
7. 7/8" insulated glass
8. Self-adjusting stainless steel clock spring balance system (constant force)
9. Bulb seal
10. Low Emissivity (Low E) glass

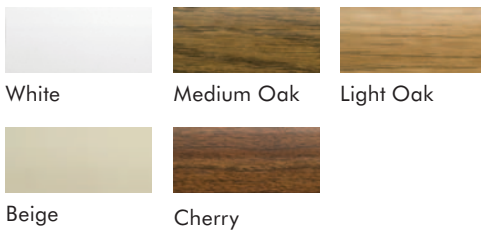
Overlapping double wall sill dam leg

**BENEFITS**

- Increases strength and energy efficiency while creating a weather-tight corner
- Improves structural strength
- Keeps water outside, no need for weep holes
- Aesthetically pleasing; keeps glass cleaner
- Attractive appearance of mulled windows
- Tight seal – prevents air and water infiltration
- Superior thermal performance; sound deadening
- Strongest in industry; allows homeowner to effortlessly raise and lower sash
- Creates an ultra-tight seal; prevents cold air infiltration
- Keeps the heat out in summer and the heat in during winter; protects against UV damage
- Eliminates potential air and water infiltration

**CUSTOMIZE, DECORATE AND COLORIZE**

**COLORS\***



**PRIZM EXTERIOR ACRYLIC COATING**

- 10 different colors standard
- Custom color matching available by request
- Reflective pigments minimize heat absorption
- No chipping or peeling
- AAMA Certified
- Lifetime warranty

**GRIDS**

- Available flat, contoured, brass pencil, colonial, diamond, prairie, and double prairie
- Placed between the panes of glass for a smooth elegant appearance

\*Woodgrain available as interior only. Colors are not an exact match. Refer to samples for accurate color match.

